

RETAIL SPACES FOR LEASE
OVERBROOK PLAZA SHOPPING CENTER
5917 JFK BOULEVARD
NORTH LITTLE ROCK, ARKANSAS

INFORMATION

- Space Size : 1,500 square feet
- Parking Ratio: 6.1 per 1,000 sf
- Property located on main artery - JFK Blvd.
- Monument sign with tenant directory
- Daily Traffic: 26,000 on JFK Blvd.
- C-3 Zoning

LEASE TERMS

- Rent: Negotiable depending on lease term and other factors
- CAM/Taxes/Insurance: water & sewer, trash removal included
- Tenant Finish allowance from Landlord is negotiable

CONTACT INFORMATION

Michael Friedrichsmeyer

Email: friedrichsmeyer@metrorealty.cc

Todd Dachenhausen

Email: todd@metrorealty.cc

Metropolitan Realty & Development, LLC

P.O. Box 6500

Sherwood, Arkansas 72124

501.835.7500

Website: www.metrorealty.cc



Information provided in the brochure is deemed to be reliable, however, Metropolitan Realty & Development, LLC makes no warranty to its accuracy.



Storefronts

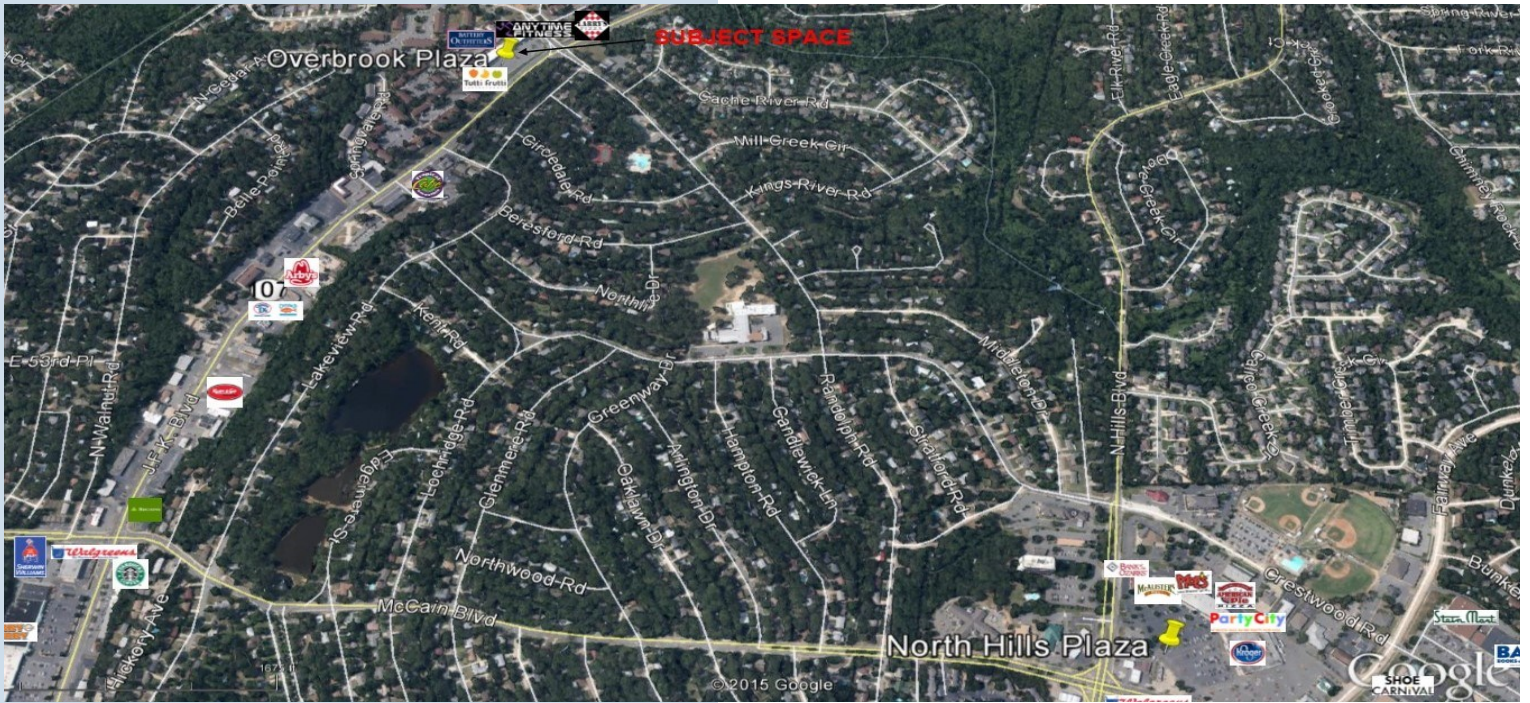
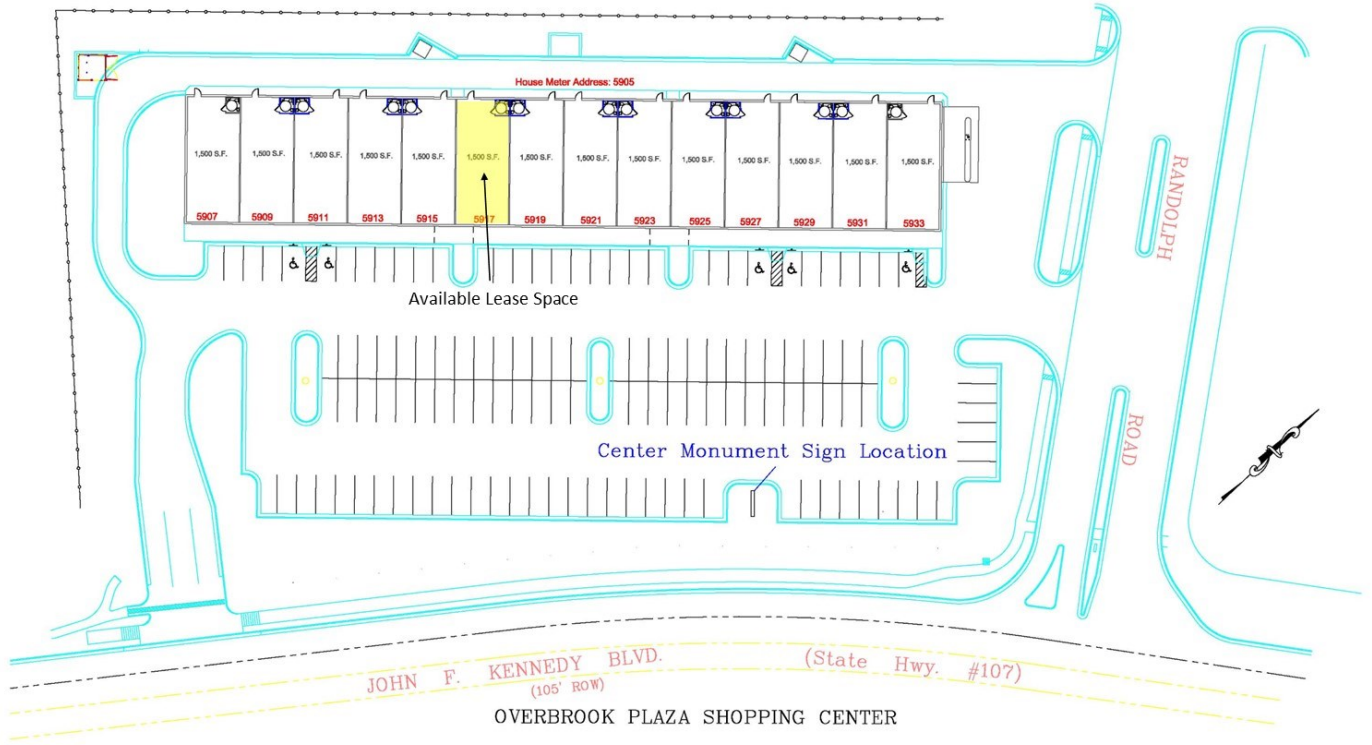


5909 & 5911 Interior looking toward front of space



SHOPPING CENTER SITE MAP

SURROUNDING AREA



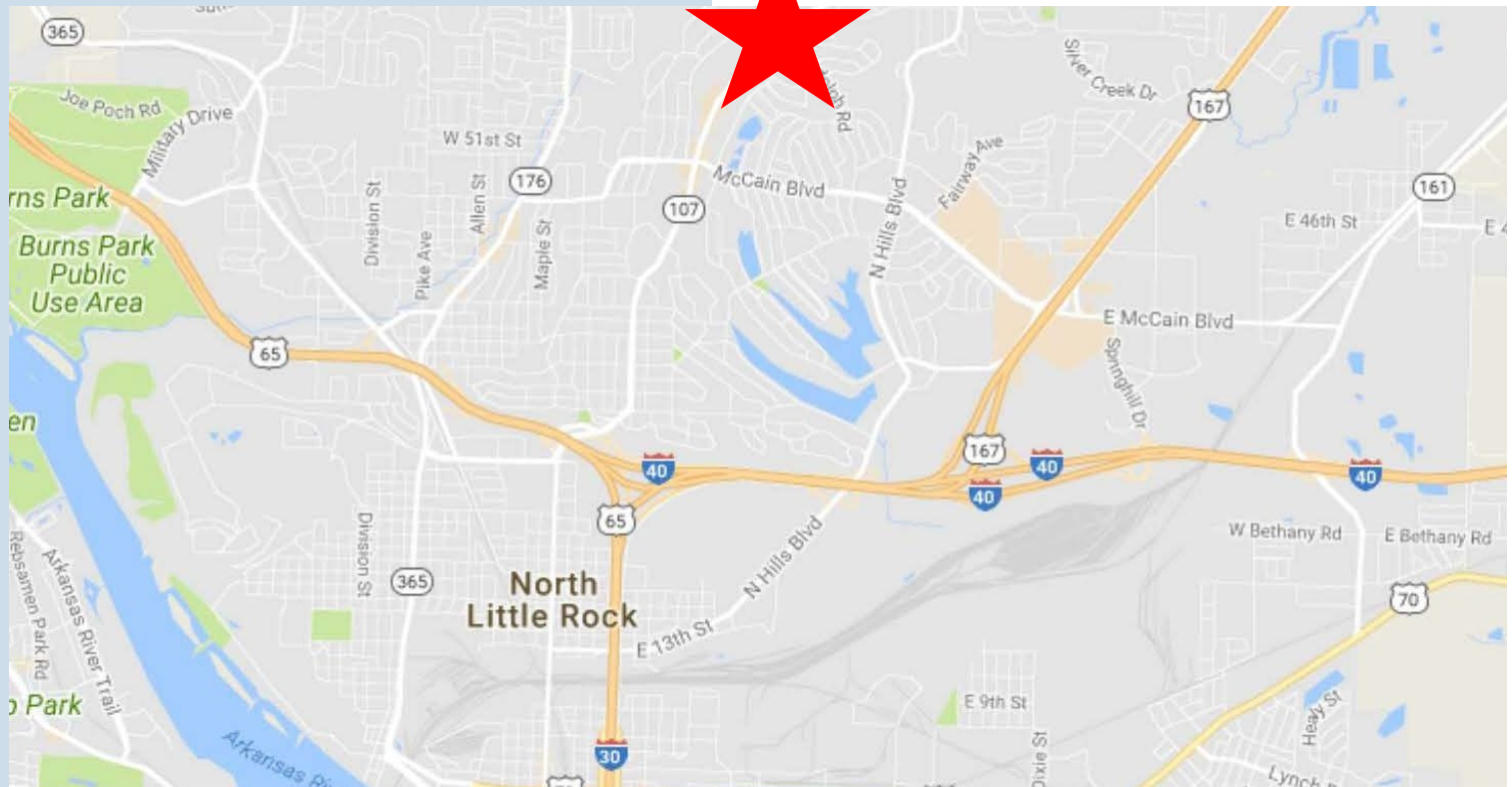
SHOPPING CENTER TENANTS



SHOPPING CENTER TENANTS



SHOPPING CENTER LOCATION MAP



DEMOGRAPHICS

Population	One Mile	Three Miles	Five Miles
2018	11,643	55,433	97,742
2023	11,592	55,538	98,517
Growth 2018 - 2023	(0.44%)	0.19%	0.79%
Average Age	41.40	39.70	38.90
Households 2018	5,043	23,501	42,033
Growth 2018 - 2023	(0.50%)	0.13%	0.80%
Median Household Income	\$59,411	\$50,728	\$46,641
Average Household Size	2.3	2.3	2.3
2017 Average HH Vehicles	2.0	2.0	2.0
Median Home Value	\$166,068	\$148,441	\$147,731
Median Year Built	1973	1972	1973

FLOORPLAN - 1,500 SF

- 3 private offices
- Front lobby with light filtering blinds
- Kitchen, storage, and restroom
- Large open working area

